

**Inhibin beta A Antibody**  
**Rabbit mAb**  
**Catalog # AP92495**

## Specification

---

### Inhibin beta A Antibody - Product Information

Application	WB
Primary Accession	<a href="#">P08476</a>
Reactivity	Rat
Clonality	Monoclonal
<b>Other Names</b>	
EDF; FRP; INHBA;	
Isotype	Rabbit IgG
Host	Rabbit
Calculated MW	47442 Da

### Inhibin beta A Antibody - Additional Information

Dilution	WB~~1:1000
Purification	Affinity-chromatography
Immunogen	A synthesized peptide derived from human Inhibin beta A
Description	Inhibins and activins inhibit and activate, respectively, the secretion of follitropin by the pituitary gland. Inhibins/activins are involved in regulating a number of diverse functions such as hypothalamic and pituitary hormone secretion, gonadal hormone secretion, germ cell development and maturation, erythroid differentiation, insulin secretion, nerve cell survival, embryonic axial development or bone growth, depending on their subunit composition.
Storage Condition and Buffer	Rabbit IgG in phosphate buffered saline , pH 7.4, 150mM NaCl, 0.02% sodium azide and 50% glycerol. Store at +4°C short term. Store at -20°C long term. Avoid freeze / thaw cycle.

### Inhibin beta A Antibody - Protein Information

**Name** INHBA

#### **Function**

Inhibins/activins are involved in regulating a number of diverse functions such as hypothalamic and pituitary hormone secretion, gonadal hormone secretion, germ cell development and maturation, erythroid differentiation, insulin secretion, nerve cell survival, embryonic axial

development or bone growth, depending on their subunit composition.

#### **Cellular Location**

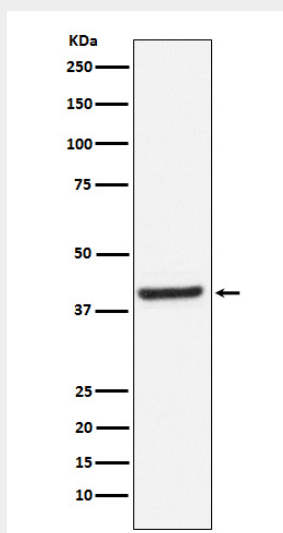
Secreted.

#### **Inhibin beta A Antibody - Protocols**

Provided below are standard protocols that you may find useful for product applications.

- [Western Blot](#)
- [Blocking Peptides](#)
- [Dot Blot](#)
- [Immunohistochemistry](#)
- [Immunofluorescence](#)
- [Immunoprecipitation](#)
- [Flow Cytometry](#)
- [Cell Culture](#)

#### **Inhibin beta A Antibody - Images**



Western blot analysis of Inhibin beta A expression in Human fetal brain lysate.